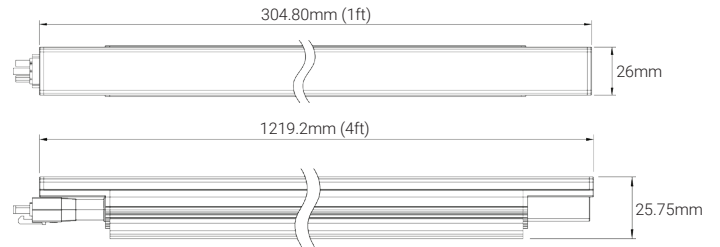
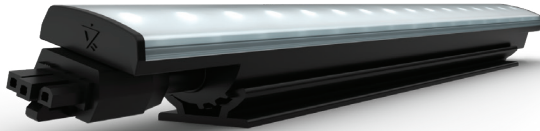
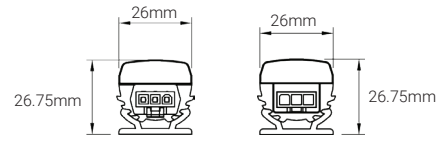


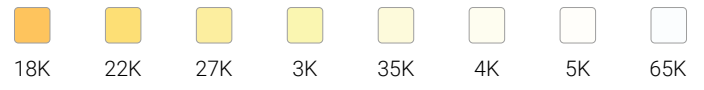
PROJECT: _____ TYPE: _____ QUANTITY: _____



CCT	18K, 22K, 27K, 3K, 35K, 4K, 5K, 65K
CRI	UP TO 98
Control	ELV
Optical Distribution	120°x150°
Operating Temperature	-4°F ~ 122°F (-20°C ~ 50°C)
Power Factor	≥ 0.9
SDCM	3- Step MacAdamEllipse
Dimensions	L: 1ft (304.9mm), 4ft (1219.2mm) W: 1 1/32" (26mm) H: 1 1/64" (25 mm)
Applications	Cove and Indirect General Illumination
Voltage	120V AC/ 277V AC 60Hz
Warranty	8 Year

Standard Output	400 - 500 lm/ 1ft	3.2W/ 1ft
Standard Output	1600 - 2000 lm/ 4ft	13W/ 4ft

WHITE LIGHT



FIXTURE RUN LENGTHS

Max Run Length	120'
----------------	------

ACCESSORIES

Leader Cable 3 Pin 10ft (3m)
Jumper Cable 3 Pin 1ft (0.3m)
Jumper Cable 3 Pin 4ft (1m)
Terminator 3 Pin
Mounting Track

STANDARDS & CERTIFICATIONS



Tested to UL & CSA by Intertek For Use in USA & CANADA.



California Code of Regulations for Energy Standards.

P8 8YEAR WARRANTY



PROJECT: _____ TYPE: _____ QUANTITY: _____

ORDER CODE

MODEL	WATTAGE	FUNCTION	CONTROL	OPTICS	LENGTH	FINISH	CUSTOM
PBC	SO		ELV	150		B	
PARIAH BORING COVE	PBC STANDARD OUTPUT	SO	ELV	ELV 120°x150°	150	1ft 4ft	BLACK B
		1800K	18				
		2200K	22				
		2700K	27				
		3000K	3				
		3500K	35				
		4000K	4				
		5000K	5				
		6500K	65				