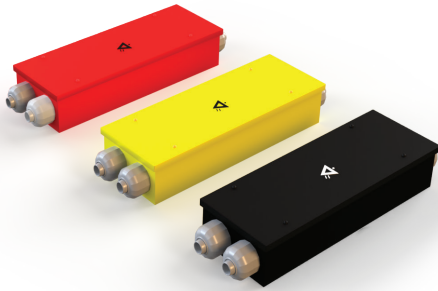


PROJECT: \_\_\_\_\_ TYPE: \_\_\_\_\_ QUANTITY: \_\_\_\_\_



Features:

- Universal Input 120V, 230V and 277V 50Hz/60Hz
- 1000W @120VAC/60Hz,
- 1800W @230VAC/50Hz,
- 2000W @277VAC/60Hz
- 0-10V, DMX512 and DALI to ELV
- Auto-Sensing Input Voltage and Frequency
- Power Interface and Data Interface with High Grade Surge Protection

Input	Input Voltage Range		120V AC - 277V AC
	Input Frequency		47-63Hz
	Input Current		8a @ 120V AC/ 60Hz, 8a @ 230V AC/ 50Hz, 8a @ 277V AC/ 60Hz
	Input Power		1000W @ 120V AC, 1800W @ 230V AC, 1000W @ 277V AC
	Standby Consumption		<2W
Output	Output Voltage Range		120V AC - 277V AC
	Output Current to LED Fixture		8a @ 120V AC/ 60Hz, 8a @ 230V AC/ 50Hz, 8a @ 277V AC/ 60Hz
	Output Power		1000W @ 120V AC/ 60Hz, 1800W @ 230V AC/ 50Hz, 2000W @ 277V AC/ 60Hz
	ELV (Trailing Edge/ Reverse Phase)		Compatible with NEMA SSL 7A-2013
Dimming Interface	0-10V	Output Voltage	11V Maximum
		Source Current	Active or Passive Dimmer
		Compatibility	Active or Passive Dimmer
		Over Voltage Protection	Withstand <30V DC Input, Higher Voltage will damage the interface
	DMX	Compatibility	Compatible with USITT DMX512-A
		Surge Protect	1KV/ 500a
Dali	TBD	TBD	
Protection	Surge Protect		L-N: 4KV/ 2KA, L-G: 4KV/ 2KA, N-G: 4KV/ 2KA
	Output Short Circuit Protection		Build in a 16A/ 500V AC fuse, fuse will open if the output is shorted
	Output Open Circuit Protection		Yes, No minimum load request
	Over Temperature Protection		Yes, The output will shut down when the case temperture reached 80°C
Condition	IP Class		IP67
	Operating Temperature		-30°C ~ + 50°C
	Storage Temperature, Humidity		-30°C ~ 70°C, 20-70% RH
Safety	Safety Standard		UL8750
	Isolation Voltage		3.75KV AC Between the data interface and power input/ output
	Isolation Resistance		100m Ohms/ 500V DC
Other	Life		≥50000H @ Ta=25°C, ≥30000H @ TA=65°C



Tested to UL & CSA by Intertek For Use in USA & CANADA.



PROJECT: \_\_\_\_\_ TYPE: \_\_\_\_\_ QUANTITY: \_\_\_\_\_

ORDER CODE

MODEL		DIMMING	
<b>PB</b>			
PRO BOX	PB	DMX/ ELV	DMXELV
		0-10V/ ELV	010VELV
		0-10V/ 0-10V	010V010V

